

**Modular Cooking Range Line  
 900XP 1200mm Gas Fry Top HP, Smooth  
 scratch resistant chromium Plate**

ITEM # \_\_\_\_\_  
 MODEL # \_\_\_\_\_  
 NAME # \_\_\_\_\_  
 SIS # \_\_\_\_\_  
 AIA # \_\_\_\_\_



391406 (E91IKAAOMIA)

\* NOT TRANSLATED \*

## Main Features

- Exclusive IcyHot installation: combine the Fry Top HP with the dual temperature refrigerated/freezer base HP and obtain a single appliance which simultaneously increases productivity and facilitates cooking and storage operations.
- Unit to be mounted on open base cupboards, bridging supports or cantilever systems.
- Two large drain holes on cooking surface permits the draining of fat into two separate 3 liter collectors placed under the cooking surface.
- Stainless steel high splash guards on the rear and sides of cooking surface.
- Piezo spark ignition with thermostatic valve for added safety.
- The special design of the control knob system guarantees against water infiltration.
- IPX5 water protection.
- Units have 4 independent controls to regulate temperature of the cooking surface.
- Scratch resistant cooking surface thanks to a special treatment of the chromium plate.
- Easy to clean and corrosion resistant chromium surface.
- Temperature range from 90° up to 270°C.
- Suitable for countertop installation.

## Construction

- Unit is 930 mm deep to give a larger working surface area.
- All exterior panels in Stainless Steel with Scotch Brite finishing.
- AISI 304 stainless steel worktop, 2mm thick.
- Model has right-angled side edges to allow flush fitting joints between units, eliminating gaps and possible dirt traps.
- Non-scratch cooking surface 20mm thick for optimum grilling results and ease of use.
- Cooking surface to be completely smooth.

## Included Accessories

- 1 of Scraper for smooth plate fry tops PNC 164255

## Optional Accessories

- Scraper for smooth plate fry tops PNC 164255 ☐
- Support for bridge type system, 1200mm PNC 206139 ☐
- Support for bridge type system, 1400mm PNC 206140 ☐
- Support for bridge type system, 1600mm PNC 206141 ☐
- BACK HANDRAIL 1200 MM - MARINE PNC 206309 ☐
- Water drain for fry tops HP PNC 206345 ☐
- SCRAPER FOR RIBB PLATE FRY TOP PNC 206420 ☐
- - NOT TRANSLATED - PNC 206455 ☐
- - NOT TRANSLATED - PNC 206468 ☐

APPROVAL: \_\_\_\_\_



**Electrolux**  
PROFESSIONAL

**Modular Cooking Range Line  
900XP 1200mm Gas Fry Top HP, Smooth  
scratch resistant chromium Plate**

- |                                    |            |                          |
|------------------------------------|------------|--------------------------|
| • Frontal handrail 1200mm          | PNC 216049 | <input type="checkbox"/> |
| • Frontal handrail 1600mm          | PNC 216050 | <input type="checkbox"/> |
| • Pressure regulator for gas units | PNC 927225 | <input type="checkbox"/> |

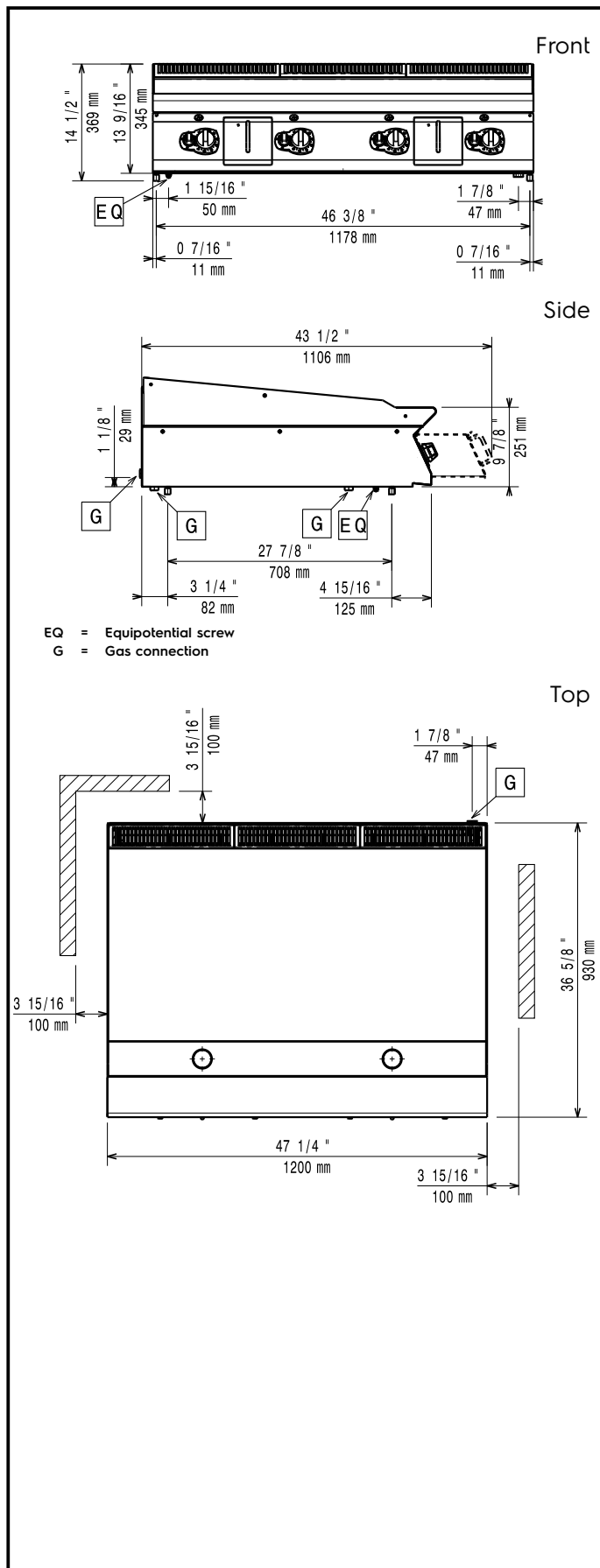
**Recommended Detergents**

- |                    |            |                          |
|--------------------|------------|--------------------------|
| • *NOT TRANSLATED* | PNC 0S2292 | <input type="checkbox"/> |
|--------------------|------------|--------------------------|



**Modular Cooking Range Line  
900XP 1200mm Gas Fry Top HP, Smooth scratch resistant chromium  
Plate**  
The company reserves the right to make modifications to the products  
without prior notice. All information correct at time of printing.

2025.05.05



### Gas

Gas Power:	33 kW
Standard gas delivery:	Natural Gas G20 (20mbar)
Gas Type Option:	LPG; Natural Gas
Gas Inlet:	1/2"

### Key Information:

External dimensions, Width:	1200 mm
External dimensions, Depth:	930 mm
External dimensions, Height:	250 mm
Net weight:	150 kg
Shipping weight:	199 kg
Shipping height:	580 mm
Shipping width:	1020 mm
Shipping depth:	1270 mm
Shipping volume:	0.75 m <sup>3</sup>
Cooking surface width:	1194 mm
Cooking surface depth:	610 mm

If appliance is set up or next to or against temperature sensitive furniture or similar, a safety gap of approximately 150 mm should be maintained or some form of heat insulation fitted.